



# GAT MONTHLY MEMBERSHIP PROGRESS REPORT

Results as of: 3/31/2022

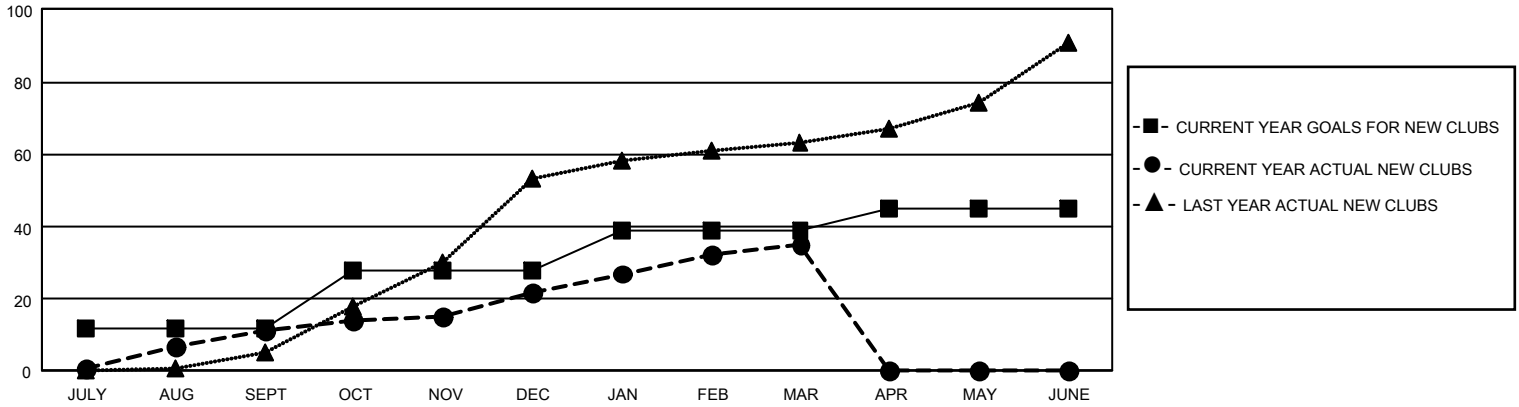
## GMT Constitutional Area 3, Group B

REPORT DOES NOT INCLUDE CLUBS IN UNDISTRICTED AREAS.

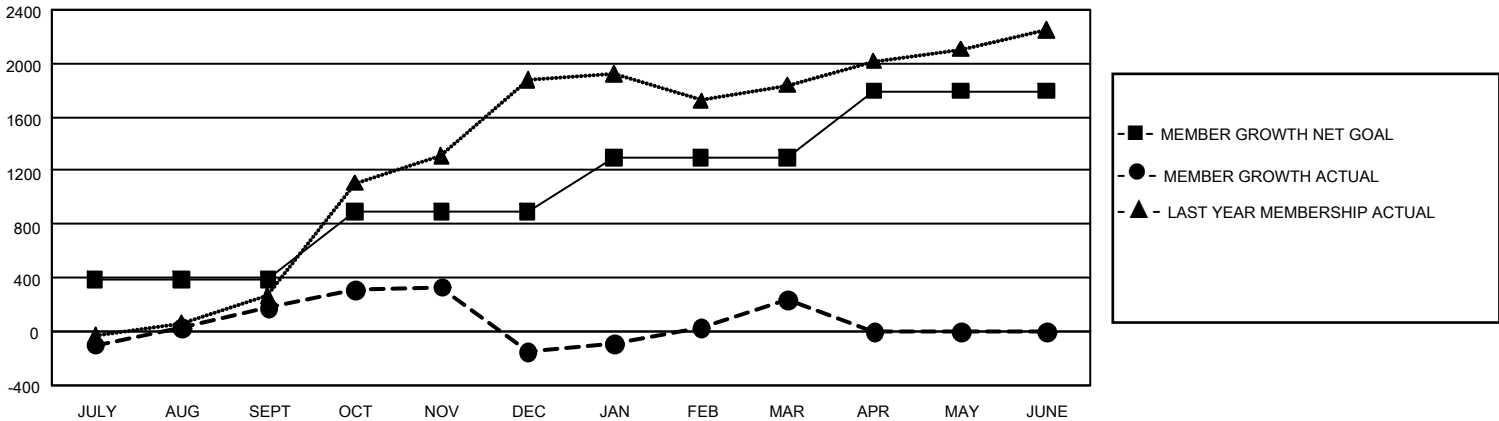
| Clubs                 |               |           |               |
|-----------------------|---------------|-----------|---------------|
| RESULTS FOR 2021-2022 |               |           |               |
| QUARTER               | NEW CLUB GOAL | NEW CLUBS | DROPPED CLUBS |
| JULY/AUG/SEPT         | 36            | 11        | 6             |
| OCT/NOV/DEC           | 48            | 11        | 4             |
| JAN/FEB/MAR           | 33            | 13        | 4             |
| APR/MAY/JUNE          | 18            | 0         | 0             |

| Members               |                        |                      |  |
|-----------------------|------------------------|----------------------|--|
| RESULTS FOR 2021-2022 |                        |                      |  |
| QUARTER               | MEMBER GROWTH NET GOAL | MEMBER GROWTH ACTUAL | DROPPED MEMBERS ACTUAL (including transfers) |
| JULY/AUG/SEPT         | 387                    | 884                  | 666  |
| OCT/NOV/DEC           | 507                    | 896                  | 1,202  |
| JAN/FEB/MAR           | 405                    | 801                  | 386  |
| APR/MAY/JUNE          | 497                    | 0                    | 0  |

GOALS AND ACTUAL NEW CLUBS CUMULATIVE



GOALS AND ACTUAL MEMBERS CUMULATIVE



|                        |   |                                 |                 |
|------------------------|---|---------------------------------|-----------------|
| DROPPED CLUBS: 13      | 396 CLUBS OF 848 ADDED 1 OR MORE NEW MEMBERS              | <u>GENDER DISTRIBUTION</u>      |                 |
| <u>DROPPED MEMBERS</u> |   | MALE                            | 10,519 (42.87%) |
| DECEASED               | 145   | FEMALE                          | 14,015 (57.12%) |
| CLUB CANCELLED         | 220   | NON BINARY                      | 0 (0.00%)       |
| OTHER                  | 1,890   | PREFER NOT TO ANSWER            | 3 (0.01%)       |
| <b>TOTAL</b>           | <b>2,255</b>  | TOTAL FAMILY UNIT MEMBERS       | 6,659           |
|                        | <a href="#">CLICK HERE FOR CUMULATIVE MEMBERSHIP DATA</a> | FAMILY MEMBERS PAYING HALF DUES | 3,882           |